

Name: \_\_\_\_\_ Date: \_\_\_\_\_ Period: \_\_\_\_\_

## A Bloody Conflict: Webquest

**Introduction:** In this web quest you will visit and use specifically chosen web sites to learn about the importance of new military technology and tactics during WWI. World War I was the first global military conflict since the industrial revolution and brought with it a level of mass death and destruction that the world had never seen before. Along with sewing machines and automobiles the industrial revolution brought new and fantastic ways for nations to destroy each other. Through this web quest you will come to know and understand how technology contributed to the destructive nature of World War I and what the conflict was like for soldiers on the ground.

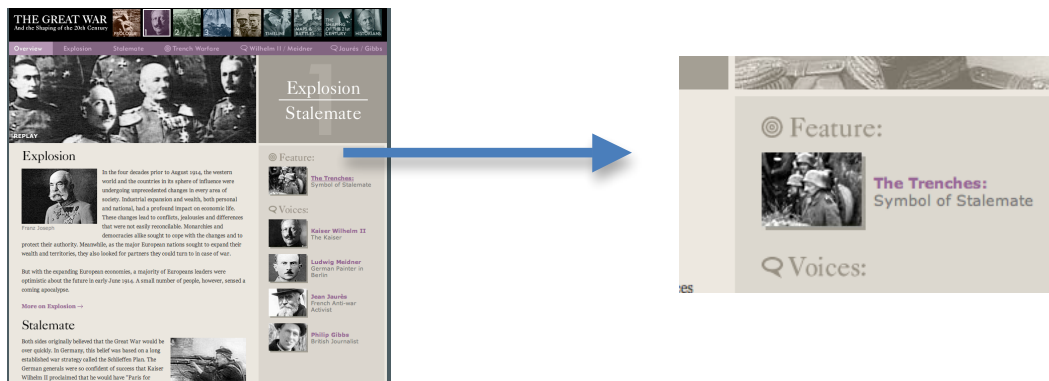
**Directions:** Follow the step-by-step instructions **IN ORDER** on this web quest sheet. The web addresses can be found on the class website under the Bloody Conflict Webquest Page. For each web site or web page you visit you will be required to answer a series of questions using the media and information provided on each Internet site. Make sure that you answer each question completely using COMPLETE SENTENCES.

**WHATEVER YOU DON'T FINISH IN CLASS WILL BE HOMEWORK - DUE NEXT TIME!!!**

### SECTION A

Direct your browser to the following web site:

[http://www.pbs.org/greatwar/chapters/ch1\\_overview.html](http://www.pbs.org/greatwar/chapters/ch1_overview.html)



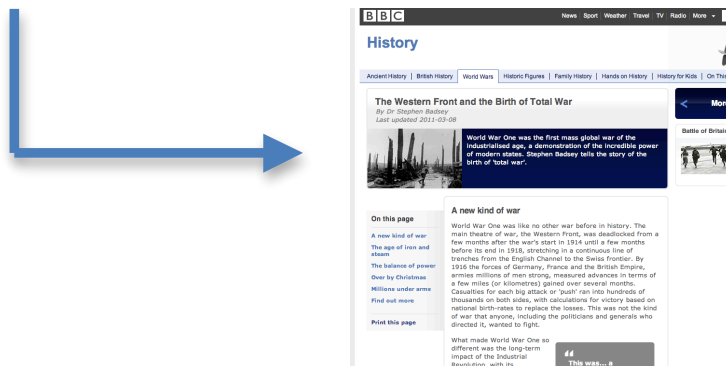
- Using this web site and the links contained on the opening page answer the following questions:
1. What was the name of the military strategy that made the German generals so confident that the war would be quickly and easily won AND explain what that strategy relied on:
  2. What were the 4 different types of trenches used in WWI?
  3. How did the German trenches differ from the trenches of the allies? Explain:

4. Describe why poison gas tended to be more successful in the early morning hours:
5. Was trench warfare more dangerous during the day or at night? Explain your answer:
6. What does the term, “No Man’s Land”, refer to and what did each side do to make movement in these areas so deadly? (Be specific)

## **SECTION B**

Direct your browser to the following web site:

[http://www.bbc.co.uk/history/worldwars/wwone/total\\_war\\_01.shtml](http://www.bbc.co.uk/history/worldwars/wwone/total_war_01.shtml)

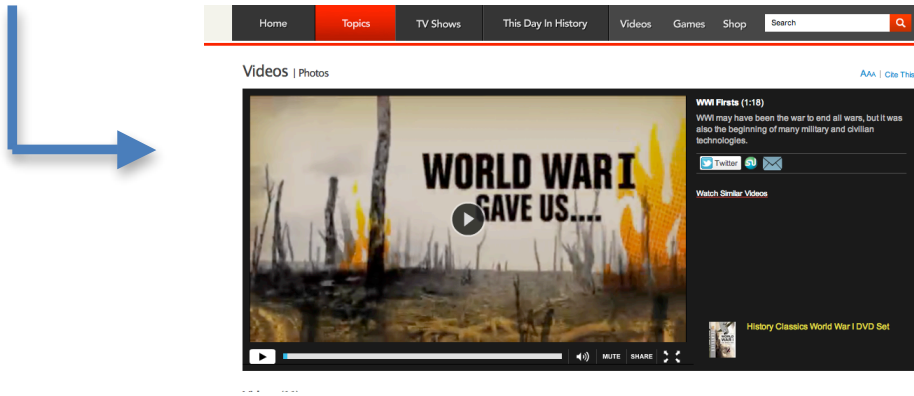


1. What does the article mean when it says “calculations for victory were based on national birthrates”?
2. Describe what the phrase “total war” mean?
3. What effect did the age of iron and steam have on new developments in warfare?
4. How did the Prussian Army revolutionize preparing for war in the late 1870s?
5. What were the two “military needs” that technology struggled to meet on the battlefield during WWI?

## SECTION C

**Read:** World War 1 was a war of “firsts”. This was the first global war since the industrial revolution and it saw the introduction of weapons, tactics, and strategies that had never been used in warfare. This is often as the first modern war. The following video will give you a great overview of some of the most important “firsts” that occurred during World War 1.

- Direct your browser to the following web site:
- <http://www.history.com/topics/world-war-i/world-war-i-history/videos/wwi-firsts>  
Watch the video titled “WWI Firsts”.

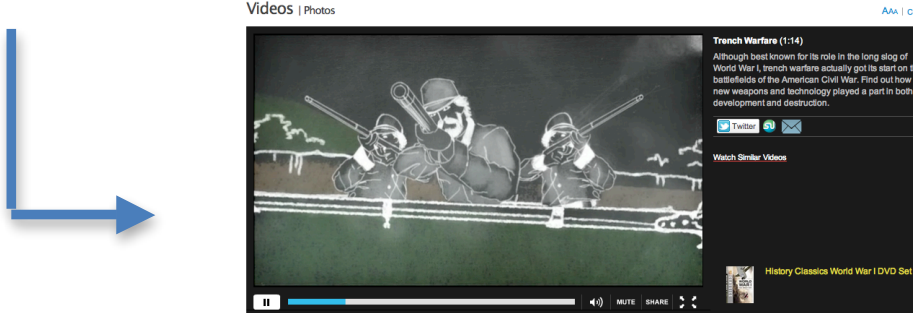


1. Who had the most tanks in combat during WWI? How many tanks did the German's have? What strategic advantage do you think this gave the allied powers?
2. Of all the WWI “firsts” mentioned in the video, which do you think had the biggest impact on the outcome of the war? Why or how so?
3. Which WWI “first” did you find most interesting or unique and why?

## **SECTION D**

**Read:** Trench warfare came to define the WWI experience. The Trenches were cramped, full of rats and lice, and breeding grounds for disease. However, the development of trench warfare occurred long before WWI and was designed as a defensive tactic by combatant nations.

- Direct your browser to the following web site:  
<http://www.history.com/topics/world-war-i/world-war-i-history/videos/trench-warfare>
- Watch the video titled “Trench Warfare”.



1. When and where did trench warfare actually begin and why did it begin? Explain:
2. How did trench warfare actually end or what brought an end to trench warfare?

## **SECTION E**

**Read:** 1916 represented the height of WWI. Trench warfare had cemented both sides against each other in a bloody stalemate where hundreds of thousands of lives were being lost with only tiny changes in the front lines and no clear victories. The Battle of the Somme is one of the most infamous illustration of the type of fighting that occurred during WWI and the inability of either side to make clear steps toward winning the war.

- Direct your browser to the following web site:  
<http://www.history.com/topics/world-war-i/battle-of-the-somme>
- Watch the video titled “1916 Battle of the Somme”

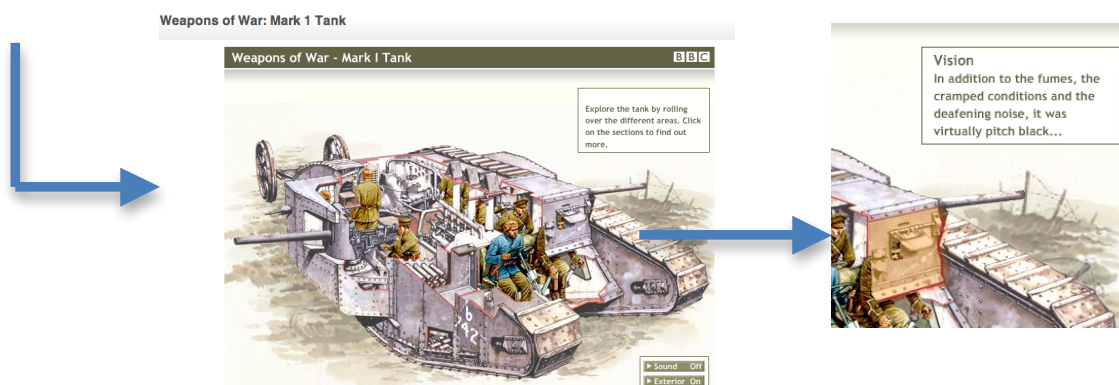


1. What was the British strategy in the Battle of the Somme (2 parts)?
2. Why did the strategy that the British employed ultimately fail (2 parts)?
3. How many casualties did the British suffer at the end of the first day of the battle?
4. Explain, in your opinion, why you think that historians look back at the Battle of the Somme as “controversial”?
5. If the battle lasted 4 months and both sides had a combined total of 1,000,000 dead, how many deaths occurred per day on average?

## **SECTION F**

Direct your browser to the following web site:

[http://www.bbc.co.uk/history/interactive/animations/mark\\_one\\_tank/index\\_embed.shtml](http://www.bbc.co.uk/history/interactive/animations/mark_one_tank/index_embed.shtml)



1. What country invented the tank and what military goals was the tank designed to achieve (2)?
2. What made the conditions in the Mark I tank appalling? Be specific:

3. How many men were did it take to operate a single Mark I tank and what would a commander do if the tank ran into ground that was bad or a route that was uncertain?
4. WWI occurred during the age of the automobile. Describe how driving a Mark I tank was very different than driving an automobile:
5. Explain how well the tanks armor protected the crew and what (2) acted to limit the armor's effectiveness:

## **SECTION G**

Direct your browser to the class website and watch this YouTube video:

<http://www.youtube.com/watch?v=c-LxzD6Luj4> or use the teacher website below...

<http://afhsmorris.weebly.com/a-bloody-conflict---webquest.html>

- Watch the video called "WWI-Weapons and Technology"
1. What was the weapon used by the majority of American soldiers in WWI?
  2. What does "Big Bertha" refer to and which nation designed it?
  3. Why did some refer to WWI as the chemists' war?
  4. What effects did mustard gas have a soldiers exposed to it during WWI?
  5. Why were tanks developed and introduced to overcome in WWI? What was the German response to the introduction of the tank?

## SECTION H

Direct your browser to the following web address:

[http://www.pbs.org/greatwar/resources/casdeath\\_pop.html](http://www.pbs.org/greatwar/resources/casdeath_pop.html)

A screenshot of a web browser window displaying the 'WWI Casualty and Death Tables' page. The page has a title bar with a 'Close Window' button. Below the title, there is a paragraph explaining the purpose of the tables: 'One way to understand the violence and slaughter that occurred in the Great War is to examine the number of casualties and deaths. Exact figures are still in dispute, because of different definitions used each category, the questionable accuracy of the recording system used and the loss or destruction of a number of official documents. The data in the tables below reflect numbers from several sources and are consistent with most experts' current estimates.' Below this text is a table with columns: Country, Total Mobilized Forces, Killed, Wounded, Prisoners and Missing, Total Casualties, and Casualties as % of Forces. The table lists data for Russia, British Empire, France, and Italy under the heading 'ALLIED AND ASSOCIATED POWERS'.

Country	Total Mobilized Forces	Killed	Wounded	Prisoners and Missing	Total Casualties	Casualties as % of Forces
ALLIED AND ASSOCIATED POWERS						
Russia	12,000,000	1,700,000	4,950,000	2,500,000	9,150,000	76.3
British Empire	8,904,467	908,371	2,090,212	191,652	3,190,235	35.8
France	8,410,000	1,357,800	4,266,000	537,000	6,160,800	73.3
Italy	5,615,000	650,000	947,000	600,000	2,197,000	39.1

- Using this table, answer the following questions:
1. What does the column titled, "Casualties as % of Forces" mean? (In your own words)
  2. Which nation mobilized the largest number of forces during WWI?
  3. **True or false:** the allied powers and Central Powers were equal in the total number of mobilized forces? What were their total mobilized numbers?
  4. **True or false:** the Central Powers had many more casualties than the Allied Powers?
  5. Which nation had the highest % of casualties during WWI?

# THIS LAST PART CAN BE COMPLETED FOR EXTRA CREDIT!!!!

*Reflective Response: Circle the option that you choose... and begin writing below.*

Option 1	Option 2
Now that you know more about how World War I was fought and the conditions that soldiers were forced to fight and die in, you will write a short letter to the head Allied Commander reporting on the conditions at the Western Front for the purpose of requesting specific types of support for your men in the field.	Now that you know more about how World War I was fought and the conditions that soldiers were forced to fight and die in, you will write a short letter to your friend/family member at home describing how technology has contributed to the destructive nature of the war for the purpose of requesting new technologies to overcome the enemies'.

Greeting: \_\_\_\_\_,

Introduction to who you are and the situation/purpose that you want to discuss in this letter:

---

---

---

---

---

Statement of purpose: (What do you want the reader to do?)

---

---

---

---

Body: (Supply evidence and details to support your purpose and explain yourself)

---

---

---

---

---

---

This is a personal letter, so try and incorporate some interesting emotional or personal story to help make your case. (Be creative.)

---

---

---

---

Conclude your letter briefly by restating your purpose and your strongest evidence or argument for that purpose.

---

---

---

---

Sincerely,

---